

# INSPECT2 Module Inspection



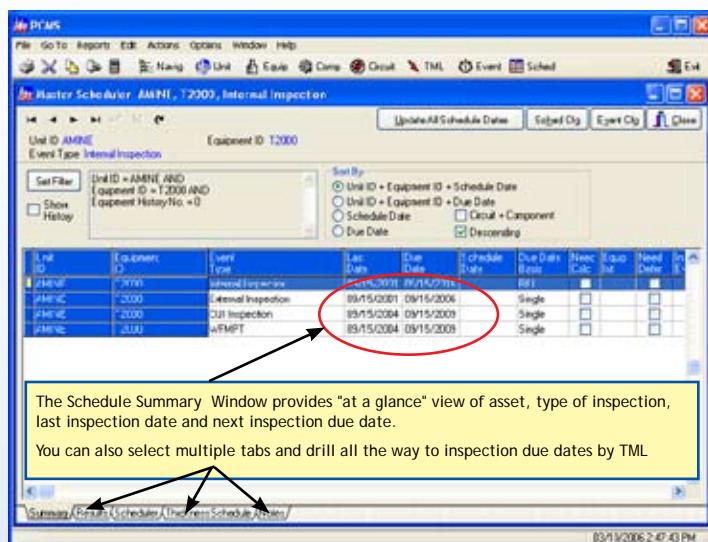
The INSPECT2 module of PCMS is an event based approach for gathering, evaluating, scheduling and reporting inspection data on plant equipment. INSPECT2 helps sites meet applicable API standards.

INSPECT2 keeps a historical record of all inspections on any piece of equipment, including attachments and recommendations. If, as a result of an inspection, additional work needs to be completed, PCMS Inspection Work Requests can be created and tracked to "Close the Loop on Inspection and Maintenance".

Use the inspection checklist builder to develop customized inspection checklists to standardize the inspection process. Once inspection events are approved, the calculator provides next inspection dates.



## PCMS Master Schedule Summary Window



The Schedule Summary Window provides "at a glance" view of asset, type of inspection, last inspection date and next inspection due date. You can also select multiple tabs and drill all the way to inspection due dates by TML.

Unit ID	Component	Event Type	Last Date	Due Date	Schedule Basis	Due Date Calc	Next Due Date	Need	Equip	Need
12000	Internal Inspection	Internal Inspection	09/15/2001	09/15/2006	Rot					
12000	CUI Inspection	CUI Inspection	09/15/2004	09/15/2009	Single					
12000	w/PMPT	w/PMPT	09/15/2004	09/15/2009	Single					

## Features

### Event Scheduler

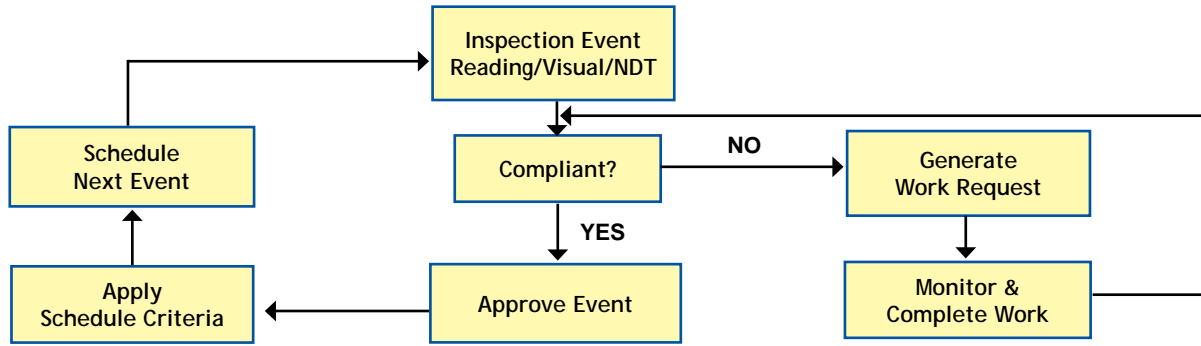
- Track inspection history, including replacement and design changes for all plant equipment
- Calculate next inspection intervals based on customized intervals
- Generate schedules by using half life calculations or due dates at fixed intervals per API 510, 570, and 653

### Inspection Checklist Builder

- Use the Inspection Checklist Builder to customize and generate standardized inspection report templates

### Repair & Recommendation Tracker

- Generate inspection work requests and recommendations associated with inspection events to ensure maintenance work is tracked.



**"Close the Loop on Inspection and Maintenance"**

Detailed inspection checklists can be easily created within PCMS and used to maintain inspection standards. Print blank checklists for inspections, or display completed detailed inspection report forms.

Filled inspection reports encapsulate important schedule details and results including last inspection date, due date and schedule dates for each inspection type.

Track Inspection Work Requests for this equipment right on the completed inspection form.

View findings and detailed information on every item on the checklist.

The IWR provides complete detailed information on any work to be completed, including the status of any SAP or EMPAC notifications

Inspection Type	Last Inspection Date	Due Date	Schedule Date
Thermos Survey			
Internal Inspection	08/15/2001	09/15/2006	
External Inspection	08/15/2001	09/15/2006	
CR Inspection	08/15/2004	09/15/2009	
WFMP	08/15/2004	09/15/2009	

This multi-page inspection data form is easily configured to create a detailed inspection checklist for inspectors.

**Benefits**

- PCMS Database keeps inspection history available at any time
- Customized, reusable inspection checklists
- Multiple event approval levels can be established
- Attach reports and images to inspection work requests
- Add other PCMS modules anytime without reinstallation of software
- Helps meet API 510, 570 and 653 standards

For additional information please contact PCMS, a member of MISTRAS Group's Software & Products Link division.  
 Phone: (216) 674-0626 • Fax: (216) 674-0631  
 Email: support@pcmssoftware.com

**HEADQUARTERS:**  
 195 Clarksville Road, Princeton Junction, NJ 08550 USA  
 Phone: (609) 716-4150 • Fax: (609) 716-4145  
 Email: sales@conaminsp.com • www.mistrasgroup.com

