

# RBI Integrator

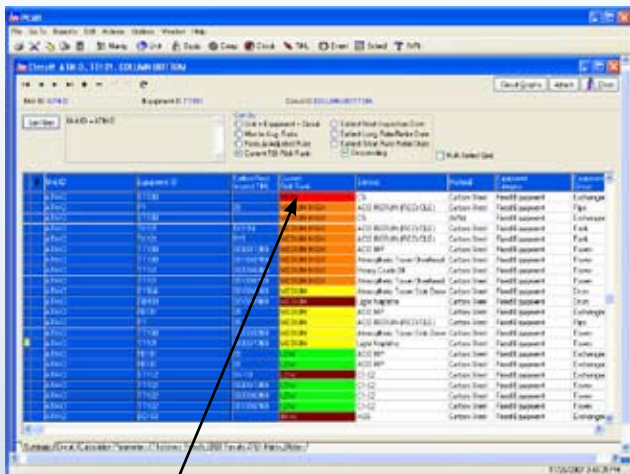
The RBI Integrator allows PCMS customers to “Integrate” RBI results with the PCMS Corrosion Monitoring and Visual Inspection module. Now you can leverage the information from third party RBI assessments by integrating the data into PCMS. Compare RBI results with Rule Based results at the circuit level. Bring assessment data into your inspection planning, document inspection effectiveness and track the change in risk level based on inspection effectiveness.

A risk based inspection approach focuses attention on equipment and the deterioration mechanisms representing the most risk to your facility. By focusing on risks and ways to lower risk, Risk Based Inspection provides a solid link between the mechanisms that lead to equipment failure and the inspection planning that lead to risk reduction. The RBI Integrator helps you get the most from your RBI assessment.

This link allows you to share and update information between PCMS and 3rd party assessments in a seamless, integrated fashion. With a few clicks of your mouse, select, verify and update risk based inspection information.

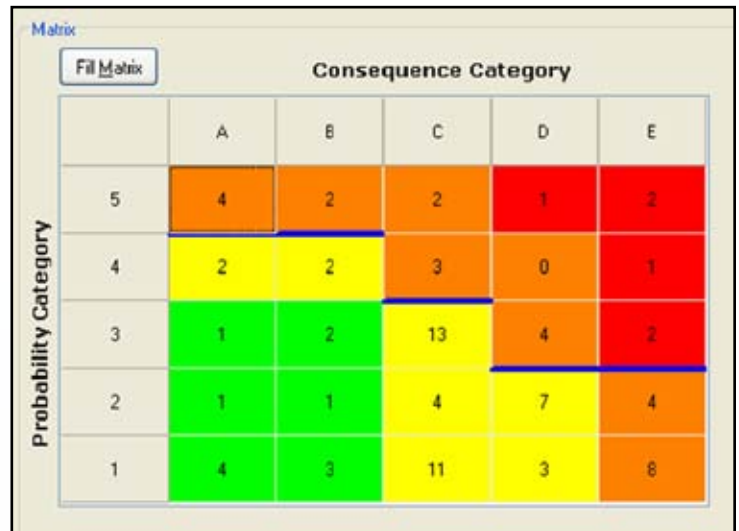
## Circuit Analysis

Use the PCMS Circuit Summary to get a quick view of all circuits in a unit, or view individual circuits once Risk Ranking is established. Use the matrix to group circuit counts by probability and consequence category. At a glance, you can focus in on problem circuits.



The screenshot shows a table with columns for Risk ID, Equipment ID, Location, Name, Insulation, and Inspection. The rows are color-coded by risk level, with red indicating the highest risk and green indicating the lowest.

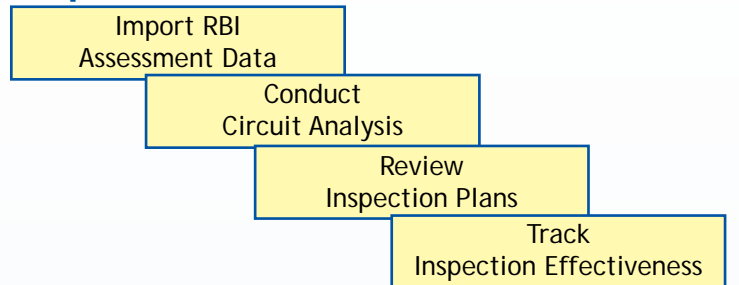
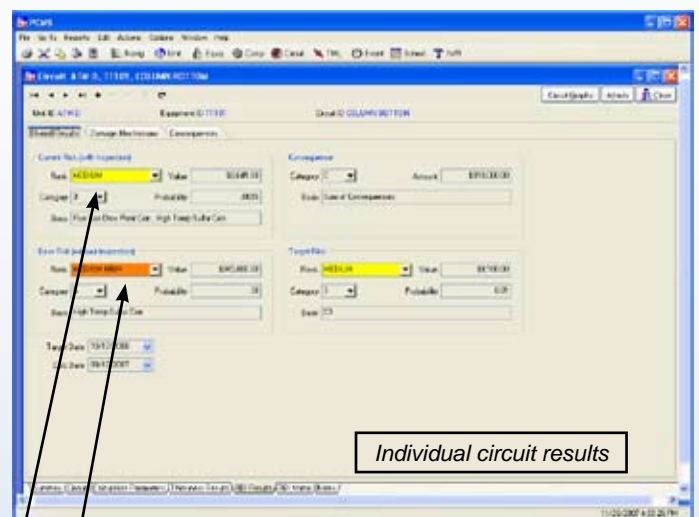
Summary of all circuits ranked by risk



The matrix shows the relationship between Probability Category (1-5) and Consequence Category (A-E). The cells contain numerical values representing the count of circuits in each category.

Probability Category	Consequence Category				
	A	B	C	D	E
5	4	2	2	1	2
4	2	2	3	0	1
3	1	2	13	4	2
2	1	1	4	7	4
1	4	3	11	3	6

## Steps:

The screenshot shows a detailed view of a circuit's risk assessment. It includes fields for Name, Category, Risk, and Inspection. Arrows point from the 'Individual circuit results' label to the specific data fields.

Individual circuit results

Base risk (established) without inspection. Current risk includes actual corrosion rates, thickness readings and inspection effectiveness.

## Scheduling & Planning

- Final results include due dates based on RBI or rule based dates
- You have the option to override rule based dates with RBI target dates or override both
- Detailed inspection plans include scope, damage mechanism and recommended inspection effectiveness

## Inspection Tracking

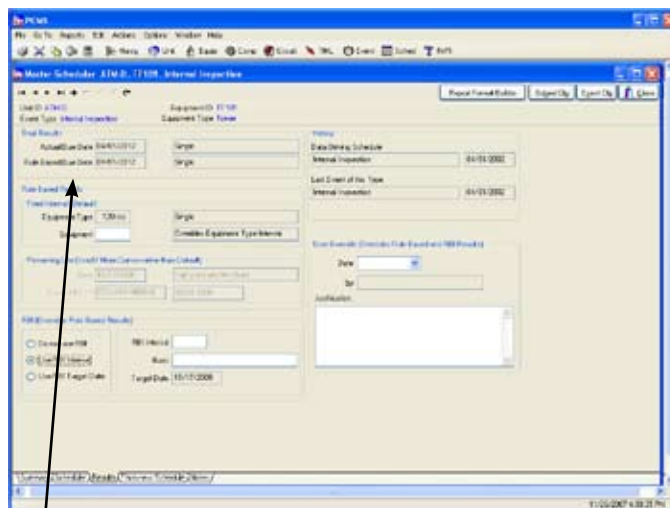
- Create an event to trigger the RBI based event report
- An event report is created if the circuit is susceptible to a particular damage mechanism
- Document the scope and effectiveness of the inspection
- Provides detailed inspection plans

## Benefits

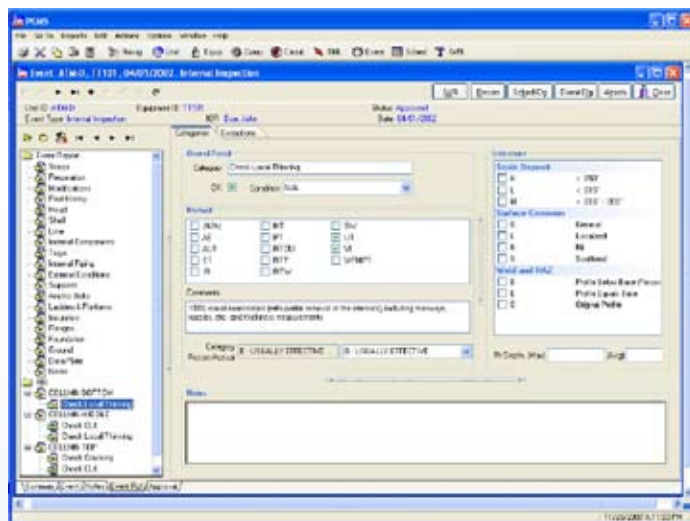
- Compare RBI Results to Rule Based results
- Focused Inspection Plans based on Damage Mechanisms
- Circuit Analysis by Risk Ranking
- Document Inspection Effectiveness
- Track Actual Risk vs. Baseline Risk vs. Target Risk

## Services

- MISTRAS Group Inc. and its partners can provide RBI Facilitators, RBI Team Leaders or RBI Practitioners to augment a client managed implementation, or provide a complete turnkey RBI implementation team.
- We also offer complete data management services. With these service, we can gather information, process the data through our Software and deliver Asset Integrity and RBI Inspection reports and schedules.
- If you require data conversion, custom software development, or training, PCMS can meet your needs.



Compare actual due date to RBI date or use RBI override



For additional information please contact PCMS, a member of MISTRAS Group's Software & Products division.

Phone: (216) 674-0626

Fax: (216) 674-0631

Email: support@pcmssoftware.com

### HEADQUARTERS:

195 Clarksville Road, Princeton Junction, NJ 08550 USA

Phone: (609) 716-4150 • Fax: (609) 716-4145

Email: sales@conaminsp.com • www.mistrasgroup.com

