

BEFORE cutting,  
coring or drilling...



...take a  
CLOSER look.

**WITH GROUND PENETRATING RADAR**

**GPR** is a quick, easy and safe way to locate buried obstructions in concrete structures before they become hazards. Learn how we can find potential obstacles and dangers of all kinds for increased accuracy, safety and peace of mind.



## Nondestructive Testing (NDT) of Concrete Using Ground Penetrating Radar



Garages



Rebar/Cables



Slabs/Voids



Walls/Floors

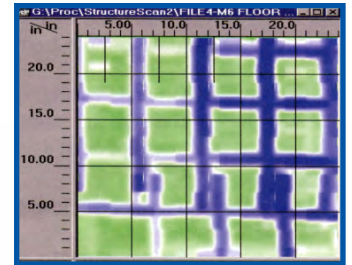


Tunnels

### Before Coring, Boring or Drilling . . . Test it!

GPR is a safe and effective way to locate buried obstructions in concrete structures. CONAM's state-of-the-art Ground Penetrating Radar (GPR) System:

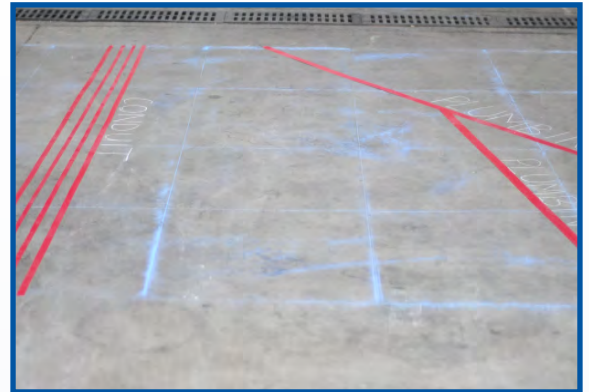
- Locates rebar, post-tension cables, conduits, voids
- Inspects walls, floors, bridge decks, tunnels, balconies, parking garages, etc.
- Measures slab thickness
- Locates targets to a depth of 24" and more



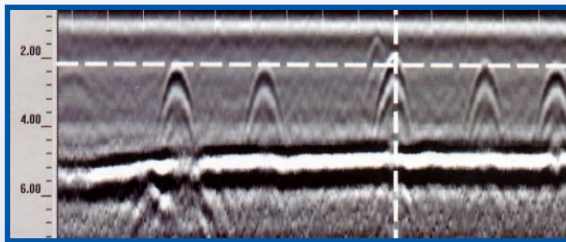
Typical GPR Output

### Key Features:

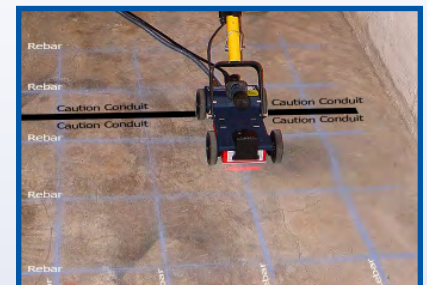
- High resolution 2.6 GHz data collection antenna
- Real-time scanning of small areas for cable, conduit and rebar location
- Large area scanning and mapping (Windows software)
- Storage of hundreds of scans for later processing



Scanning large areas and map for future projects or reference.



Locating depth and position of identified target using the cursor.



Scanning small areas in real time to quickly locate conduits, cables or re-bars before boring or drilling.

**Corporate Hqts:** Princeton Junction, NJ • (609) 716-4150 • Fax (609) 716-4145

Email: [sales.services@mistrasgroup.com](mailto:sales.services@mistrasgroup.com) • Website: [www.mistrasgroup.com](http://www.mistrasgroup.com)

### Regional Hqts:

*East Coast* - Philadelphia (610) 497-0400 • *Southeast* - Monroe (704) 291-2360

*Mountain* - Denver (303) 393-9689 *Gulf Coast* - Houston (713) 473-6111

*Midwest* - Chicago (630) 230-3400 • *West Coast* - Los Angeles (562) 597-3932